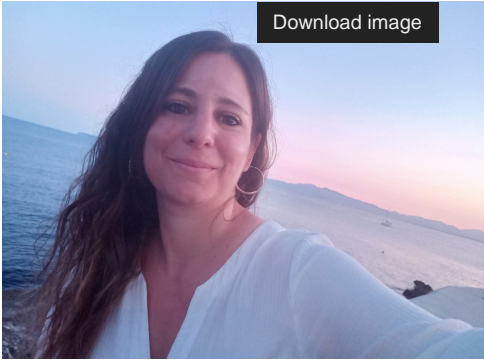




Anna Amado



Anna Amadó holds a Ph.D. in Social Sciences, Education, and Health from the Universitat de Girona (2014), a Master's degree in Educational Psychology from the Universitat de Barcelona (2010), and a Bachelor's degree in Psychology from the Universitat de Girona (2008).

She currently serves as a lecturer in the Department of Psychology, Sociology, and Social Work at the Universitat de Lleida. Since the academic year 2021-2022, she has been collaborating with the Universitat d'Andorra. Previously, she worked as an associate professor at the Universitat de Girona (2013-2023) and as a collaborating professor at the Universitat Oberta de Catalunya (2013-2018) and the Universitat de Barcelona (2021-2023). For eight years (2016-2023), she worked as a professional psychologist in the field of elderly care.

She has recently joined the "Llengua i Educació" Research Group at the Universitat de Lleida. Up to the present day, her research interests have focused on the study of socio-cognitive skills development (mainly in children) and its relationship with language development and executive functions. She also collaborates on studies related to language development in children from bilingual social contexts and has participated in various knowledge transfer activities.

CONTACT

Department of Psychology, Sociology, and Social Work

Faculty of Education, Psychology, and Social Work

Universitat de Lleida

Avda. Estudi General, 4

25001 Lleida – Espanya

Tel.: +34 973 706 535

Fax: +34 973 706 502

E-mail: anna.amado@udl.cat

Researcher ID: K-7506-2017

Orcid ID: 0000-0002-3012-4202